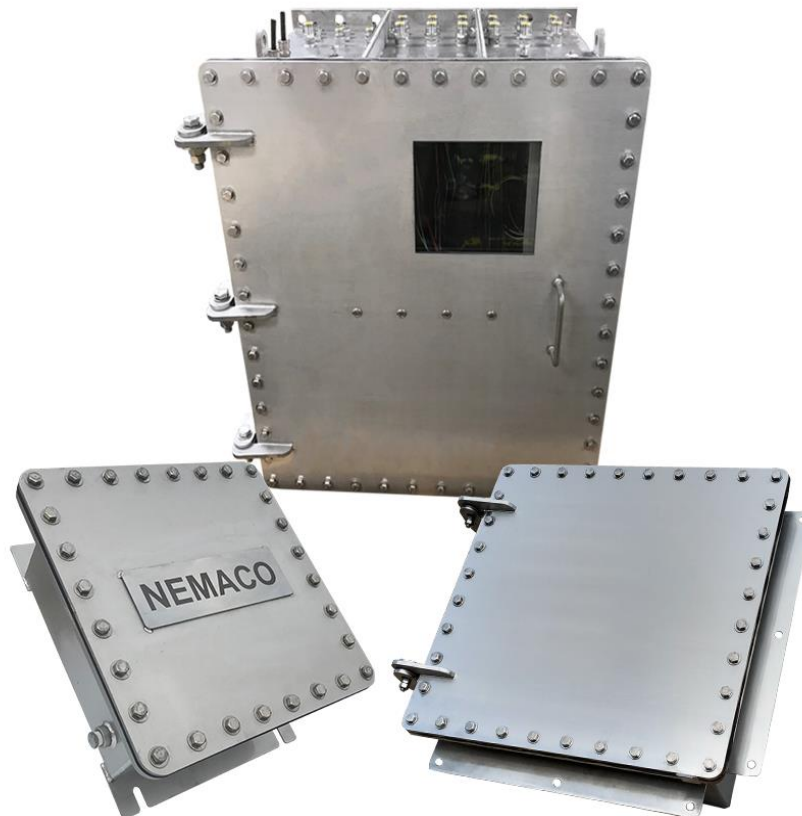


NEMACO™

EXCELLENT ELECTRICAL ENCLOSURES

UL LISTED SUBMERSIBLE ENCLOSURES
NEMA 6P STAINLESS STEEL (IP67 / IP68)



PERFORMANCE CLASS ENCLOSURES

- * Submersible Waterproof NEMA 6P (IP68) Enclosures
- * 15 Ft. - 24 Hour Performance Testing Factory Standard
- * Conduit & Cable Waterproof Sealing Solutions
- * Advanced Rust Free Passivation Surface Cleaning
- * Submersible Enclosures available in 304 and 316 SS

Tel (281) 251-4233

NEMACO.COM

SALES@NEMACO.COM

Nemaco Technology, LLC. "Nemaco" is a trademark of Nemaco Technology, LLC. All Rights Reserved.

Specifications are subject to change without notice.

INDUSTRIAL & BUSINESS APPLICATIONS

NEMA 6P (IP67/IP68) Stainless Steel Enclosures (and junction boxes) provide excellent protection in submersible environments against corrosion and the entry of water during occasionally continued submersion. These submersible enclosures are widely used in the following industrial sectors: Communications, Electrical Power, Transit, Signaling and Rail Control, Water Treatment Facilities, Security, and Marine Electronics.

NEMA 6P / IP68 SUBMERSIBLE ENCLOSURE QUALITY STANDARDS

Nemaco's performance class submersible NEMA 6P / IP68 enclosures are manufactured to be strong, tough & durable for rough environments. Therefore, Nemaco use the most ideal materials for each design and application. All enclosures are performance factory tested 24 hrs. using ISO17025 international standard instrumentation and test equipment. Custom PerformanceTesting

PERFORMANCE MATERIALS AVAILABLE & OPTIONS

- * 304 & 316 Stainless Steel with Chemical Passivation Cleaning.
- * Powder Coated Aluminum with 316SS Stainless Steel Hardware.
- * Non-Conductive Fiberglass Reinforced Plastic (FRP).
- * Performance Class Seals: Silicone (UL Approved). EPDM, VITON, BUNA-N.
- * Mechanical Hardware: Hinges, Pull Handles and Captive Hardware.
- * Clear Windows (non-UL) are designed and available upon request.
- * Pipe Fittings (NPT, FPT, FF), Cable Glands, and Roxtec Seals are available.
- * Custom large enclosures are available upon request.
- * NEMA 1, 3R, or 4X internal door can be installed for spacial application.
- * Made in the USA - Fast Custom Production Delivery to USA & Canada.

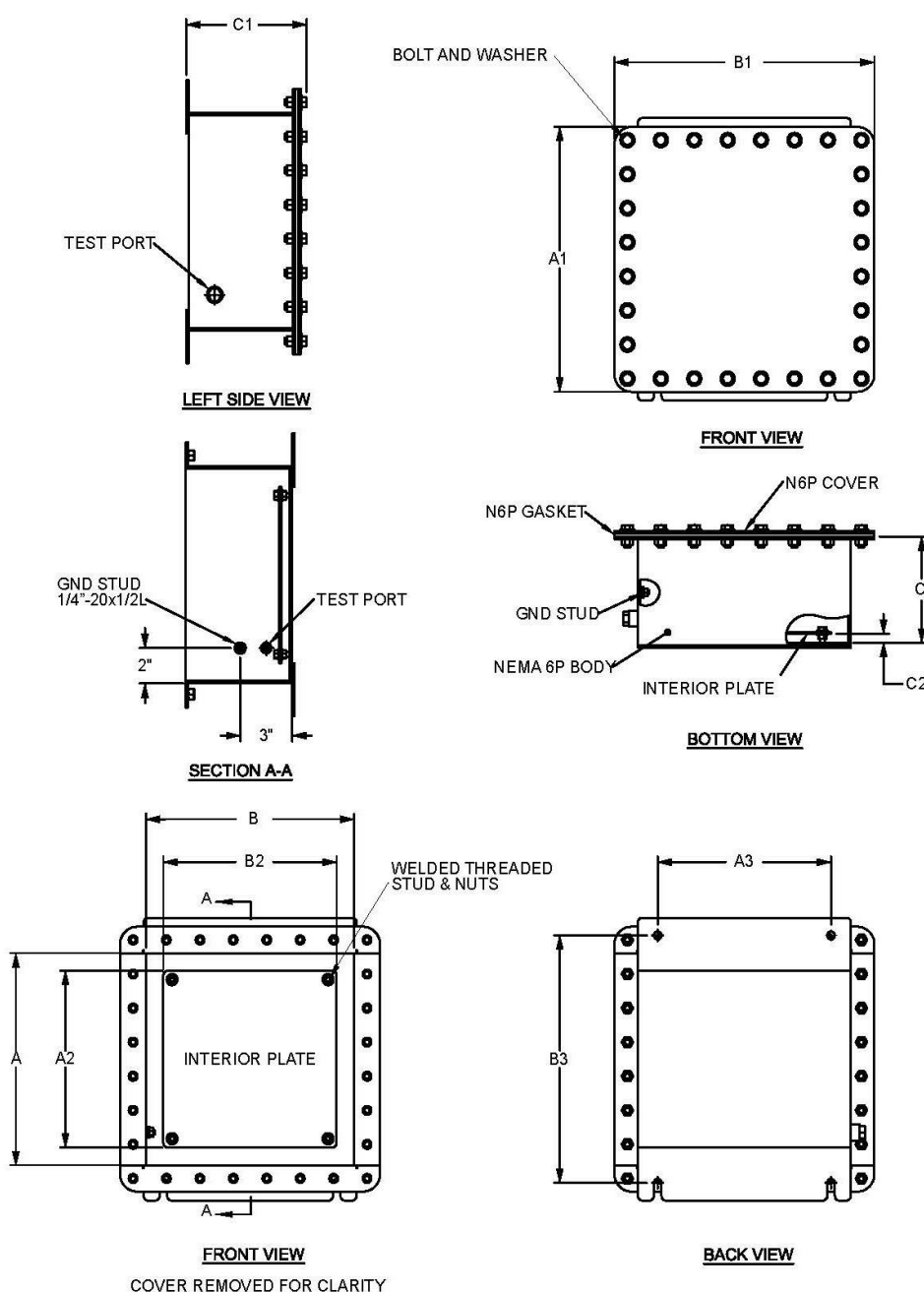
NEMA 6P SUBMERSIBLE ENCLOSURE



**PLC CONTROL CABINET
COVER REMOVED FOR CLARITY**

Enclosure	Interior Dimensions	Exterior Dimensions	Interior Panel (Option)			Exterior Mounting Tabs		Estimated Weight	Figure
Part Number	A x B x C	A1 x B1 x C1	A2 x B2	C2	IPT	A3 x B3	TAB	LBS.	No.
N6P040404-ULSS	4 x 4 x 4	7 x 7 x 4.5	N/A	N/A	N/A	/ x 6	10ga	8	1
N6P060604-ULSS	6 x 6 x 4	9 x 9 x 4.5	N/A	N/A	N/A	8 x 4	10ga	14	1
N6P080806-ULSS	8 x 8 x 6	11 x 11 x 6.5	6 x 6	0.5	1/4-20	10 x 6	10ga	20	1
N6P101008-ULSS	10 x 10 x 8	13 x 13 x 8.5	8 x 8	0.5	1/4-20	12 x 8	10ga	30	1
N6P121208-ULSS	12 x 12 x 8	15 x 15 x 8.5	10 x 10	0.5	1/4-20	14 x 10	10ga	39	1
N6P161608-ULSS	16 x 16 x 8	19 x 19 x 8.5	14 x 14	0.5	1/4-20	18 x 14	10ga	80	1
N6P201608-ULSS	20 x 16 x 8	24 x 20 x 8.5	18 x 14	0.5	3/8-16	22 x 14	0.38	108	2
N6P242412-ULSS	24 x 24 x 12	28 x 28 x 12.5	22 x 22	0.5	3/8-16	26 x 22	0.50	182	2
N6P303012-ULSS	30 x 30 x 12	35 x 35 x 12.5	28 x 28	0.5	3/8-16	32 x 28	0.50	293	2
N6P362412-ULSS	36 x 24 x 12	41 x 29 x 12.5	34 x 22	0.5	3/8-16	38 x 22	0.50	289	2
N6P363012-ULSS	36 x 30 x 12	41 x 35 x 12.5	34 x 28	0.5	3/8-16	38 x 28	0.50	388	2
N6P363612-ULSS	36 x 36 x 12	41 x 41 x 12.5	34 x 34	0.5	3/8-16	38 x 34	0.50	461	2
N6P483616-ULSS	48 x 36 x 16	53 x 41 x 16.5	46 x 34	0.5	3/8-16	50 x 34	0.50	625	2

NEMA 6P STAINLESS STEEL (IP67 / IP68) SMALL ENCLOSURE DESIGN (FIGURE 1)



NOT TO SCALE

ENCLOSURE MATERIAL OPTIONS

- ☐ 304 STAINLESS STEEL
- ☐ 316 STAINLESS STEEL

STAINLESS STEEL CORROSION PROTECTION PKG.

- ☐ STANDARD PASSIVATION (EXTERIOR)
- ☐ FULL PASSIVATION (EXTERIOR AND INTERIOR)

CONDUIT/CABLE SEAL

- ☐ NPT FITTING HUBS
- ☐ CABLE GLANDS
- ☐ ROXTEC SEALS
- ☐ MULTIPIN RECEPTACLES

COVER OPTIONS

- ☐ N6P HINGE
- ☐ LIFT OFF HANDLE
- ☐ WINDOW KIT (NON UL)
- ☐ CAPTIVE HARDWARE

GASKET OPTIONS

- ☐ SILICONE (UL STANDARD)
- ☐ EPDM
- ☐ VITON
- ☐ BUNA-N

BACK PANEL (INTERIOR PLATE)

- ☐ WHITE POWDERCOATED STEEL
- ☐ WHITE POWDERCOATED ALUMINUM
- ☐ ALUMINUM, MILL FINISH
- ☐ 304 STAINLESS STEEL
- ☐ OTHER _____

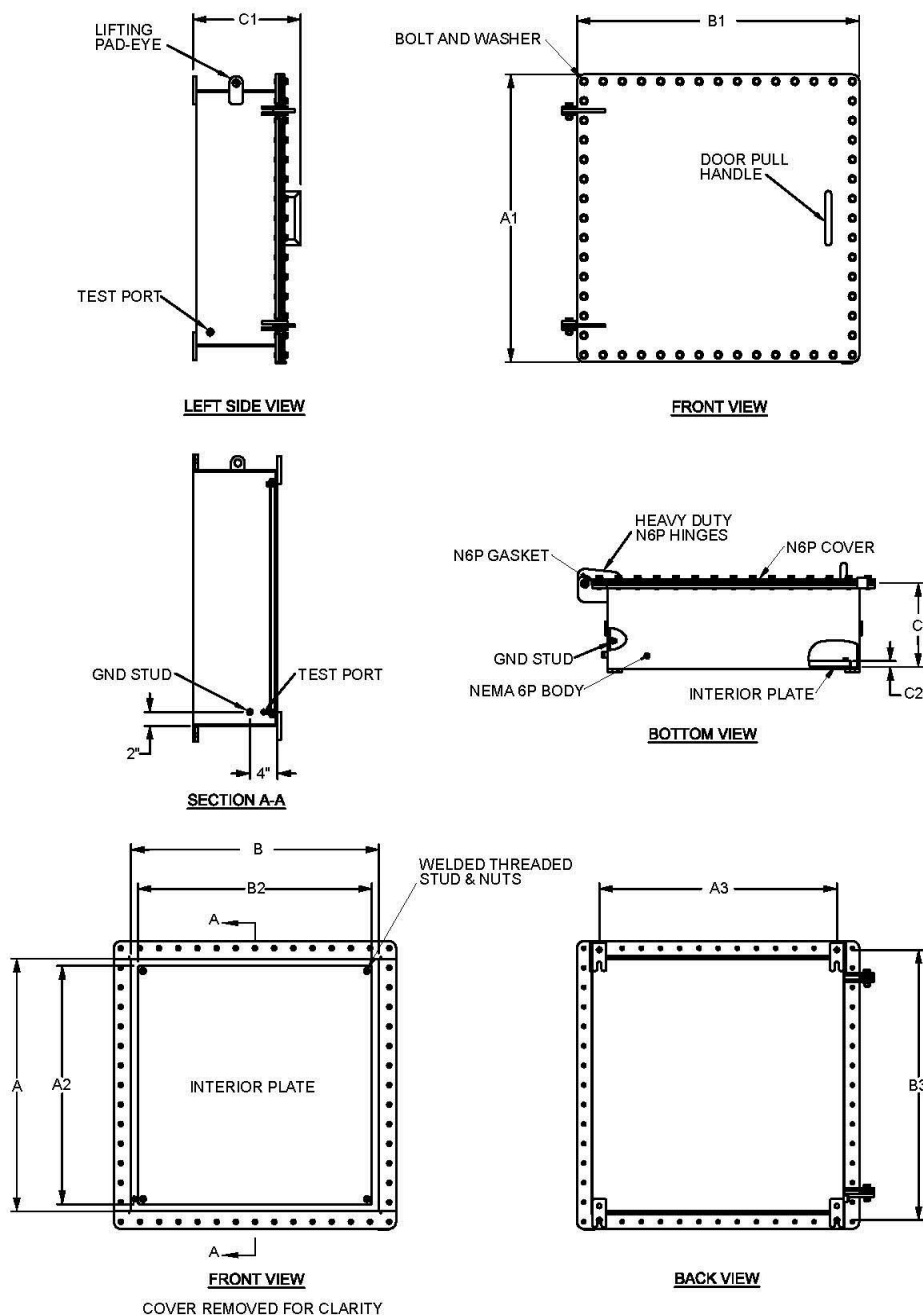
DEPTH OF WATER SUBMERSION

- ☐ 5 FT. SUBMERSION
- ☐ 15 FT. SUBMERSION
- ☐ 30 FT. SUBMERSION
- ☐ 100 FT. SUBMERSION

TESTING HOUR

- ☐ 24 HRS. (STANDARD)
- ☐ 36 HRS.
- ☐ 72 HRS.
- ☐ OTHER _____

NEMA 6P STAINLESS STEEL (IP67 / IP68) LARGE ENCLOSURE DESIGN (FIGURE 2)



ENCLOSURE MATERIAL OPTIONS

- ☐ 304 STAINLESS STEEL
- ☐ 316 STAINLESS STEEL

STAINLESS STEEL CORROSION PROTECTION PKG.

- ☐ STANDARD PASSIVATION (EXTERIOR)
- ☐ FULL PASSIVATION (EXTERIOR AND INTERIOR)

CONDUIT/CABLE SEAL

- ☐ NPT FITTING HUBS
- ☐ CABLE GLANDS
- ☐ ROXTEC SEALS
- ☐ MULTIPIN RECEPTACLES

COVER OPTIONS

- ☐ N6P HINGE
- ☐ LIFT OFF HANDLE
- ☐ WINDOW KIT (NON UL)
- ☐ CAPTIVE HARDWARE

GASKET OPTIONS

- ☐ SILICONE (UL STANDARD)
- ☐ EPDM
- ☐ VITON
- ☐ BUNA-N

BACK PANEL (INTERIOR PLATE)

- ☐ WHITE POWDERCOATED STEEL
- ☐ WHITE POWDERCOATED ALUMINUM
- ☐ ALUMINUM, MILL FINISH
- ☐ 304 STAINLESS STEEL
- ☐ OTHER _____

DEPTH OF WATER SUBMERSION

- ☐ 5 FT. SUBMERSION
- ☐ 15 FT. SUBMERSION
- ☐ 30 FT. SUBMERSION
- ☐ 100 FT. SUBMERSION

TESTING HOUR

- ☐ 24 HRS. (STANDARD)
- ☐ 36 HRS.
- ☐ 72 HRS.
- ☐ OTHER _____

NOT TO SCALE

(281) 251-4233

WWW.NEMACO.COM

SALES@NEMACO.COM