

NEMA 6P (IP68) Stainless Enclosures - Heavy Duty - Junction Boxes

NEMACO™

Excellent Electrical Enclosures

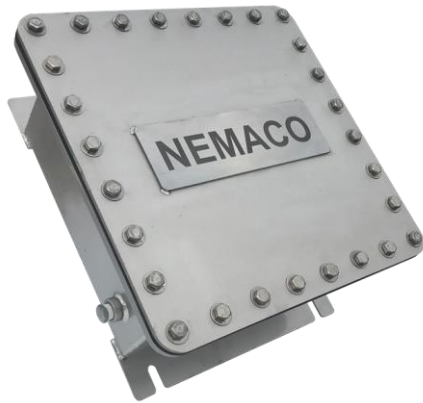
www.nemaco.com

sales@nemaco.com

Call for Solutions

Tel 281-251-4233

NEMA 6P Enclosures - 304 and 316 Stainless Steel - Quality Solutions



NEMA 6P (IP68) Stainless Steel Enclosures (and junction boxes) provide excellent protections in submersible environments against corrosion and the entry of water during occasionally continued submersion. These submersible enclosures are widely used in chemical plants, off-shore platforms, and telecommunications equipment applications. Nemaco offers performance class, economy classes, and custom-built 6P (IP68) enclosures that are manufactured per customer's specifications, dimensions, seals and materials. All enclosures are factory performance tested with ISO17025 standard instrumentation and equipment.

NEMA 6P Enclosures - Materials and Options Available

- Nemaco offers NEMA 6P enclosures in **304 & 316 Stainless Steel** and **Powder Coated Aluminum**.
- Standard Environmental Seals & Specialty Seals are available in **Neoprene, EPDM, Buna-N, Silicone**.
- Industrial design **Hinges, Door Pull Handles**, and **Lexan Window** kits are available for large enclosures.
- Precision machined **Captive Hardware** option available in any enclosure sizes.
- **Interior Sub-panels** are available in Aluminum (standard) & White Powder Coated Carbon Steel
- Custom Fittings (**NPT, FPT, FF**), **Cable Glands**, and **Roxtec Seals** are available on request.
- **Performance Class** (Machined Flange) and **Economy Class** (Nuts to Flange) can be selected.

Note: 316 SS is the standard enclosure material. Add "-S6" to Part Number.

Option for 304 SS, Add "-S4" to the part number, for ex. N6P040404-S4

Nemaco Tel. 281-251-4233

Nemaco.com

Enclosure	Interior Dimensions	Exterior Dimensions	Interior Panel (Option)			Exterior Mounting Tabs		Estimated Weight	Figure
			A2 x B2	C2	IPT	A3 x B3	TAB		
Part Number	A x B x C	A1 x B1 x C1	A2 x B2	C2	IPT	A3 x B3	TAB	LBS.	No.
N6P-040404	4 x 4 x 4	7 x 7 x 4.5	N/A	N/A	N/A	6 x 2	10ga	10	1
N6P-060604	6 x 6 x 4	9 x 9 x 4.5	N/A	N/A	N/A	8 x 4	10ga	22	1
N6P-080806	8 x 8 x 6	11 x 11 x 6.5	6 x 6	0.5	1/4-20	10 x 6	10ga	35	1
N6P-101008	10 x 10 x 8	13 x 13 x 8.5	8 x 8	0.5	1/4-20	12 x 8	10ga	49	1
N6P-121208	12 x 12 x 8	15 x 15 x 8.5	10 x 10	0.5	1/4-20	14 x 10	10ga	62	1
N6P-141408	14 x 14 x 8	17 x 17 x 8.5	12 x 12	0.5	1/4-20	16 x 12	10ga	76	1
N6P-161608	16 x 16 x 8	19 x 20 x 8.5	14 x 14	0.5	3/8-16	18 x 14	0.38	92	1
N6P-181808	18 x 18 x 8	22 x 22 x 8.5	16 x 16	0.5	3/8-16	20 x 16	0.38	130	2
N6P-202008	20 x 20 x 8	24 x 24 x 8.5	18 x 18	0.5	3/8-16	22 x 18	0.38	154	2
N6P-242408	24 x 24 x 8	28 x 28 x 8.5	22 x 22	0.5	3/8-16	26 x 22	0.38	202	2
N6P-303012	30 x 30 x 12	34 x 34 x 12.5	28 x 28	0.5	3/8-16	32 x 28	0.50	312	2
N6P-362412	36 x 24 x 12	40 x 28 x 12.5	34 x 22	0.5	3/8-16	38 x 22	0.50	293	2
N6P-363012	36 x 30 x 10	40 x 34 x 10.5	34 x 28	0.5	3/8-16	38 x 28	0.50	362	2
N6P-363612	36 x 36 x 12	40 x 40 x 12.5	34 x 34	0.5	3/8-16	38 x 34	0.50	431	2

Nemaco Technology, LLC. "Nemaco" is a trademark of Nemaco Technology, LLC. All Rights Reserved.

Specifications are subject to change without notice. Rev. 6-22-2020

NEMA 6P (IP68) Stainless Enclosures - Heavy Duty - Junction Boxes

NEMACO™

Excellent Electrical Enclosures

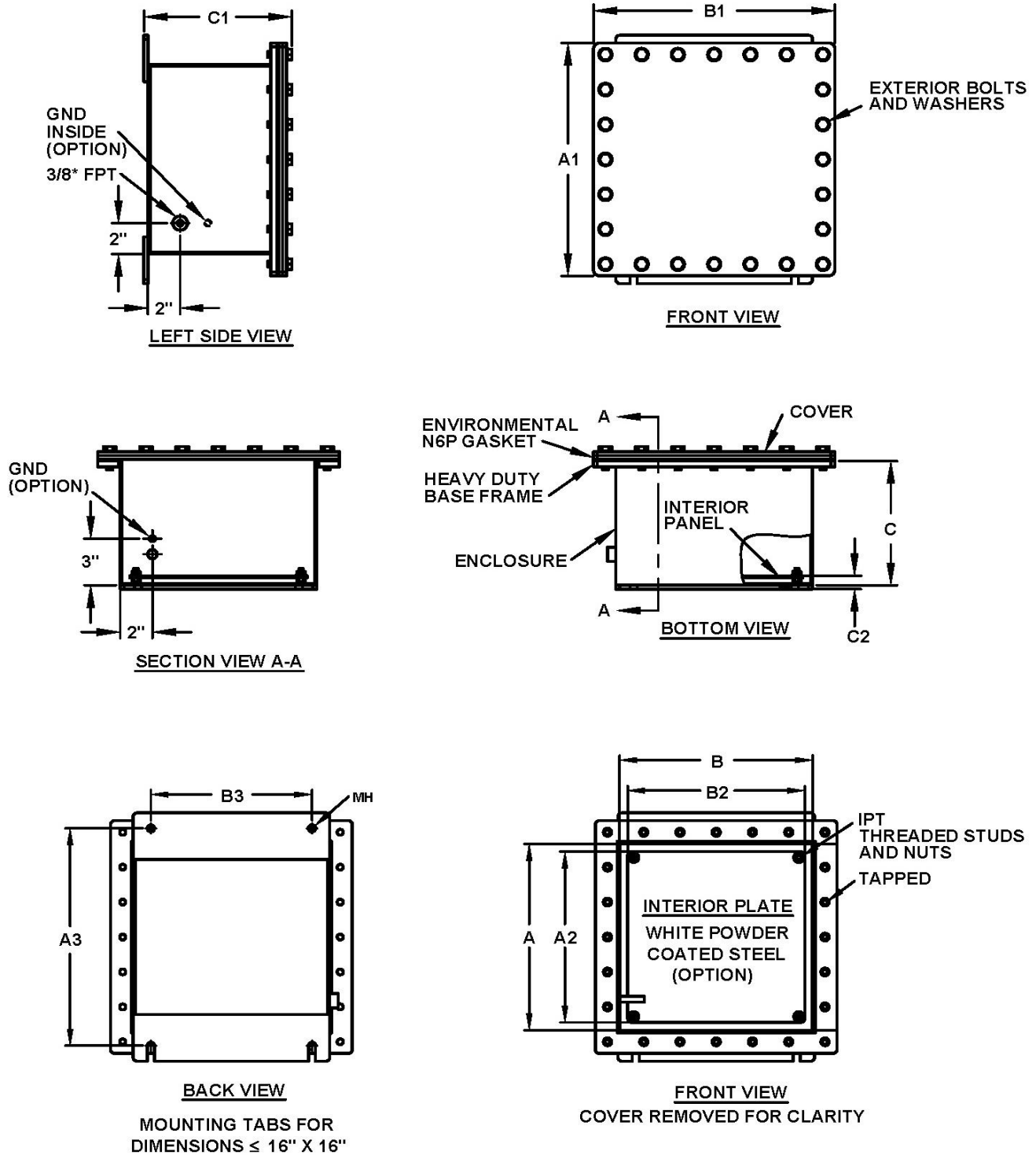


FIGURE 1: Nema 6P Enclosures 16 x 16 or smaller

NEMA 6P (IP68) Stainless Enclosures - Heavy Duty - Junction Boxes

NEMACO™

Excellent Electrical Enclosures

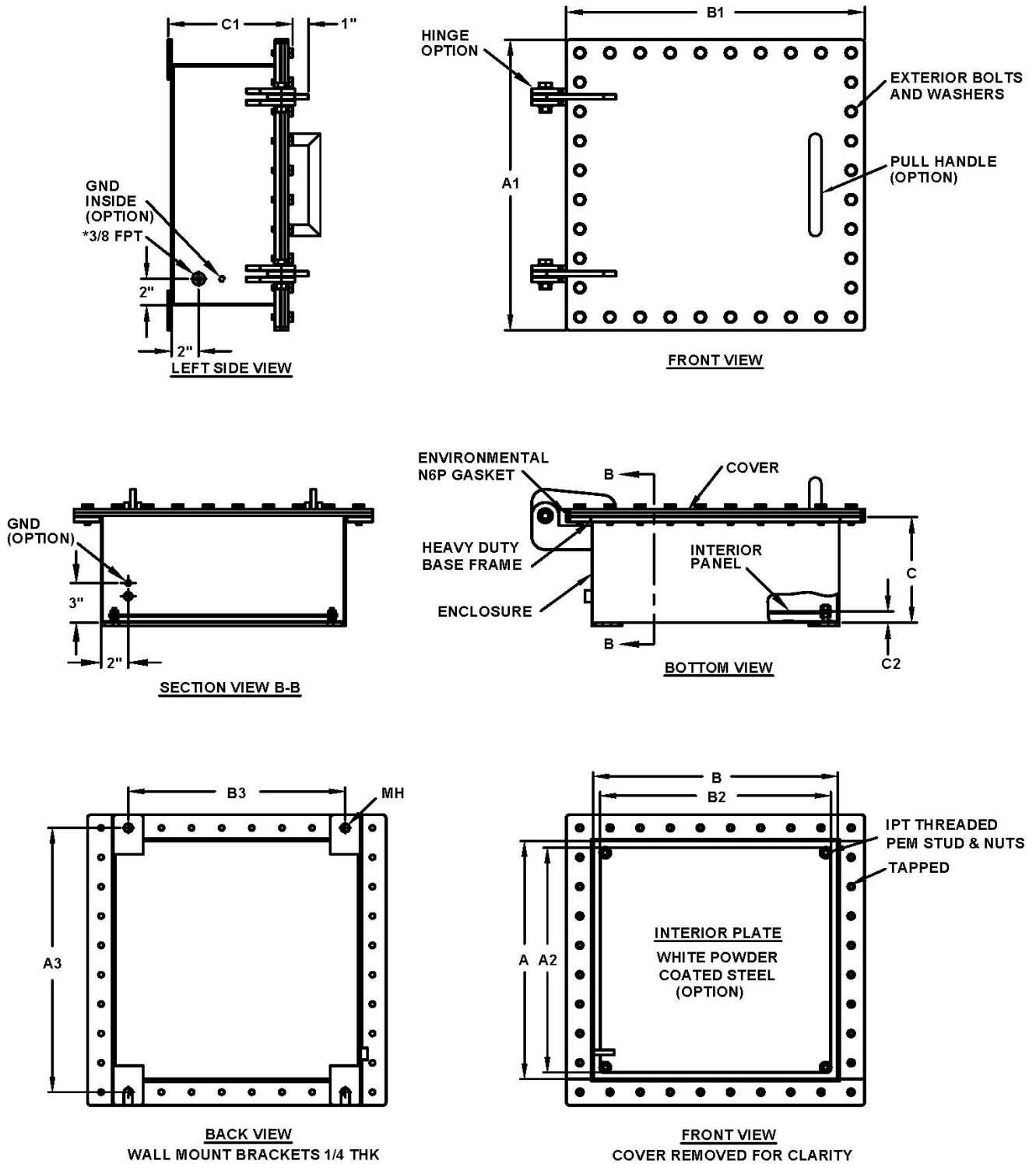


FIGURE 2: Nema 6P Enclosures Larger than 16 x 16