

NEMA 6 (IP68) Powder Coated Steel and Aluminum Enclosures

NEMACO™

Excellent Electrical Enclosures

www.nemacotech.com

SalesTeam@nemaco.info

Ask for Quotes today

Tel. 281-251-4233

NEMA 6 Enclosure - Powder Coated Steel and Aluminum - Quality Solutions

NEMA 6 (IP68) Submersible Enclosures provide protections against ingress of water such as falling rain, sleet, snow splashing water, hose-directed water and moreover occasion temporarily submersion. Not only ingress of water but they also give protection to hazard part against any solid objects such as falling dirt as well as windblown dust. NEMA 6 Enclosures are widely used in industrial applications either indoor or outdoor environment. Together with occasion temporarily submersion, they can be put in several environment that could be temporary under water. All NEMA 6 enclosures are tested according to customers' submersion requirements for 24 hrs, ISO17025 standard instrumentation and equipment. Powder coated steel and Aluminum are options to select.



NEMA 6 Enclosure - Materials and Options Available

- Nemaco offers NEMA 6 enclosures in **Powder Coated Steel** and **Aluminum** materials
- Standard Environmental Seals & Specialty Seals are available in **Neoprene**, **EPDM**, **Buna-N**, **Silicone**.
- Industrial design **Hinges**, **Door Pull Handles**, and **Lexan Window** kits are available for large enclosures.
- Precision machined **Captive Hardware** option available in any enclosure sizes.
- **Interior Sub-panels** are available in Aluminum (standard) & White Powder Coated Carbon Steel.
- Custom Fittings (**NPT**, **FPT**, **FF**), **Cable Glands**, and **Roxtec Seals** are available on request.
- **Performance Class** (Machined Flange) and **Economy Class** (Nuts to Flange) can be selected.

Note: Powder coated steel is the standard enclosure material. Add "-CS" to Part Number.

Option for Aluminum, Add "-AL" to the part number, for ex. N6P040404-AL

Nemaco Tel. 281-251-4233

NemacoTech.com

Enclosure	Interior Dimensions	Exterior Dimensions	Interior Panel (Option)			Exterior Mounting Tabs		Estimated Weight	Figure
Part Number	A x B x C	A1 x B1 x C1	A2 x B2	C2	IPT	A3 x B3	TAB	LBS.	No.
N6P-040404	4 x 4 x 4	7 x 7 x 4.5	N/A	N/A	N/A	6 x 2	10ga	10	1
N6P-060604	6 x 6 x 4	9 x 9 x 4.5	N/A	N/A	N/A	8 x 4	10ga	22	1
N6P-080806	8 x 8 x 6	11 x 11 x 6.5	6 x 6	0.5	1/4-20	10 x 6	10ga	35	1
N6P-101008	10 x 10 x 8	13 x 13 x 8.5	8 x 8	0.5	1/4-20	12 x 8	10ga	49	1
N6P-121208	12 x 12 x 8	15 x 15 x 8.5	10 x 10	0.5	1/4-20	14 x 10	10ga	62	1
N6P-141408	14 x 14 x 8	17 x 17 x 8.5	12 x 12	0.5	1/4-20	16 x 12	10ga	76	1
N6P-161608	16 x 16 x 8	19 x 20 x 8.5	14 x 14	0.5	3/8-16	18 x 14	0.38	92	1
N6P-181808	18 x 18 x 8	22 x 22 x 8.5	16 x 16	0.5	3/8-16	20 x 16	0.38	130	2
N6P-202008	20 x 20 x 8	24 x 24 x 8.5	18 x 18	0.5	3/8-16	22 x 18	0.38	154	2
N6P-242408	24 x 24 x 8	28 x 28 x 8.5	22 x 22	0.5	3/8-16	26 x 22	0.38	202	2
N6P-303012	30 x 30 x 12	34 x 34 x 12.5	28 x 28	0.5	3/8-16	32 x 28	0.50	312	2
N6P-362412	36 x 24 x 12	40 x 28 x 12.5	34 x 22	0.5	3/8-16	38 x 22	0.50	293	2
N6P-363012	36 x 30 x 10	40 x 34 x 10.5	34 x 28	0.5	3/8-16	38 x 28	0.50	362	2
N6P-363612	36 x 36 x 12	40 x 40 x 12.5	34 x 34	0.5	3/8-16	38 x 34	0.50	431	2

Nemaco Technology, LLC. "Nemaco" is a trademark of Nemaco Technology, LLC. All Rights Reserved.

Specifications are subject to change without notice. Rev. 10-5-2018

NEMA 6 (IP68) Powder Coated Steel and Aluminum Enclosures

NEMACO™

Excellent Electrical Enclosures

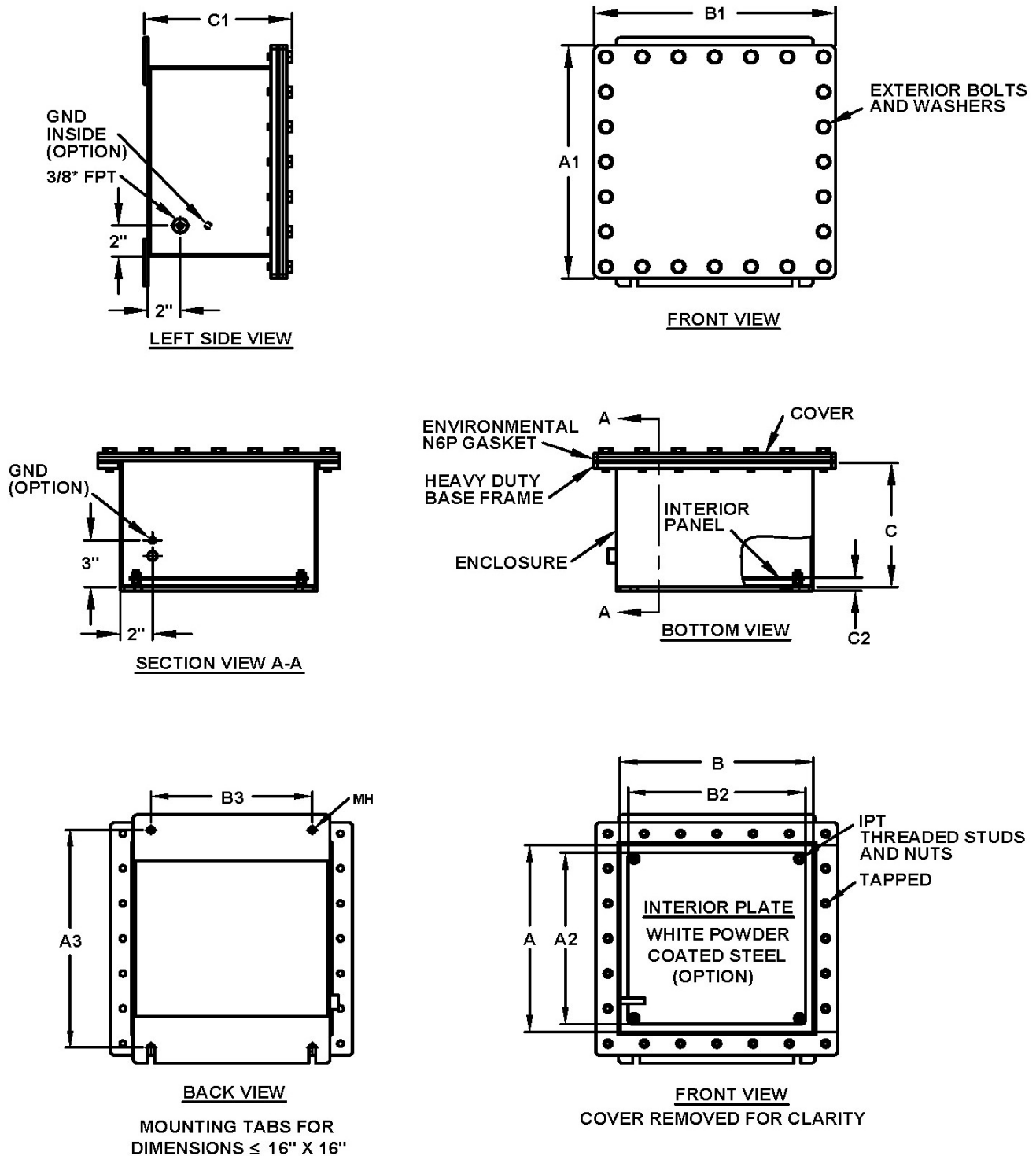


FIGURE 1: Nema 6P Enclosures 16 x 16 or smaller

NEMA 6 (IP68) Powder Coated Steel and Aluminum Enclosures

NEMACO™

Excellent Electrical Enclosures

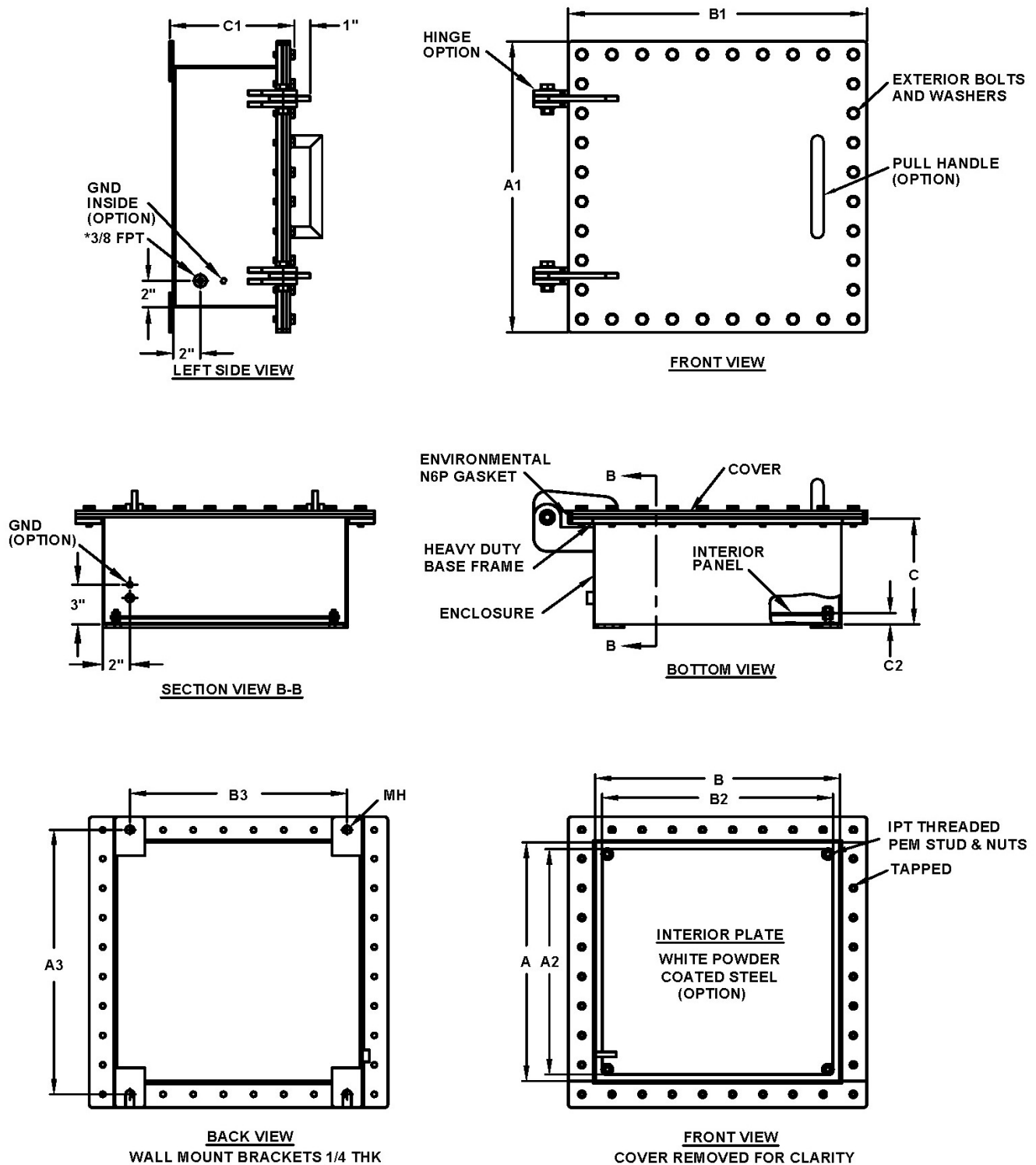


FIGURE 2: Nema 6P Enclosures Larger than 16 x 16