

Free Standing - Outdoor -NEMA 4/4X - 19" SCADA Rack Cabinets

NEMACO™

Excellent Electrical Enclosures



Outdoor - Weather Proof - NEMA 4/4X - 19" SCADA Rack Cabinets

- Nemaco offers Front & Back Access Doors for Data Server Equipment Maintenance.
- NEMA 4/4X - 3PT Latches for Total Dust, Rain, Snow & Water Washdown Resistance.
- NEMA 4/4X - Industrial Air Conditioners - Smart Remote Communications & Controls.
- Strong Free Standing Footing for Easy Installation to Outdoor Concrete Pad.
- Digital Air Conditioner Display for easy programming - Keypad Lock-out Function.

Nemaco offers Great Enclosure Features & Custom Options.

- Standard Powder Coat Finished ANSI 61 Gray. NEMA 4X - 304 & 316 Stainless Available
- Adjustable 19" Rack Rail Slide System that Easily Fits Rackmount Equipment.
- 19" Rack Rails: Powder Coated Steel (standard), Aluminum & Stainless Steel (Options)
- 19" Rack Rails: 3/8" Sq. Hole (standard), #10-32 Tapped (Option) for all materials.
- Radiant Foam Insulation Barrier R=3.2, 0.5" thk, (R=5, 3/4" thk Option Available)
- Super Fast Customization Services (for holes, cut-outs & cables) are Available.

Nemaco Tel. 281-251-4233	Note: Powder Coated Steel (3/8" Sq Hole) is the Standard Rack Rail System
NemacoTech.com	Aluminum & Stainless Steel Rack Rails can be added to the enclosures.

SCADA Rack Cabinet Part Number* (NEMA 4 Powdercoated)	Enclosure Size H x W x D	EIA ** Rack Space	NEMA 4/12 Rated Air Conditioners Standard Units, 120 Volts, 60 Hz (A/C units 230 & 480 volts, 50/60 Hz are available)				Door Handles Padlock Provision	Estimated Enclosure Wt (Lbs) without A/C
N4-662630-SRC-PC	66 x 26 x 30	36U	3000 BTU NE030126-04 (94 lbs)	4000 BTU NE040126-04 (94 lbs)	5000 BTU NE050126-04 (112 lbs)	6000 BTU NE060126-04 (112 lbs)	304SS Handle 3PT Roller Zinc Finish	385
N4-662636-SRC-PC	66 x 26 x 36	36U						425
N4-662642-SRC-PC	66 x 26 x 42	36U						452

Notes: * Stainless steel NEMA 4X Cabinets: N4X662630-SRC-304SS (for example)

**Combined EIA rack space of top and lower sections. Top Section = 12U, Lower Section = 15U, Back Door Section = 36U

• KEY FEATURES • EXCELLENT QUALITY •



Front & Back Doors for Easy Access



Keyboard Pull-Out Tray & NEMA 4 Seals



Easy Open 3 PT Latch Roller Wheels

Free Standing - Outdoor -NEMA 4/4X - 19" SCADA Rack Cabinets

NEMACO™

Excellent Electrical Enclosures



WINDOW KIT SIZES for SCADA CABINET

Factory Installed - Window Kits - Available for Select Sizes			
Part No.	Size (H x W)	Material	Minimum Door Size
LW0606	6"x6"	Lexan	n/a
LW0808	8"x8"	Lexan	n/a
LW1005	10"x5"	Lexan	n/a
LW1307	13"x7"	Lexan	n/a
LW1212	13"x13"	Lexan	n/a
LW1515	15"x15"	Lexan	26" x 26" (Top Front)
LW1919	19"x15"	Lexan	30" x 26" (Lower Front)
LW2020	25"x15"	Lexan	36" x 26" (Back Door)
LW2525	35"x15"	Lexan	46" x 26" (Back Door)
LW3725	57"x15"	Lexan	68" x 26" (Back Door)
Note: * Other polycarbonate materials may be substitute			
Call Nemaco for Custom Size Windows & Glass Materials			

NEMA 4/12 Enclosure with Window Kit

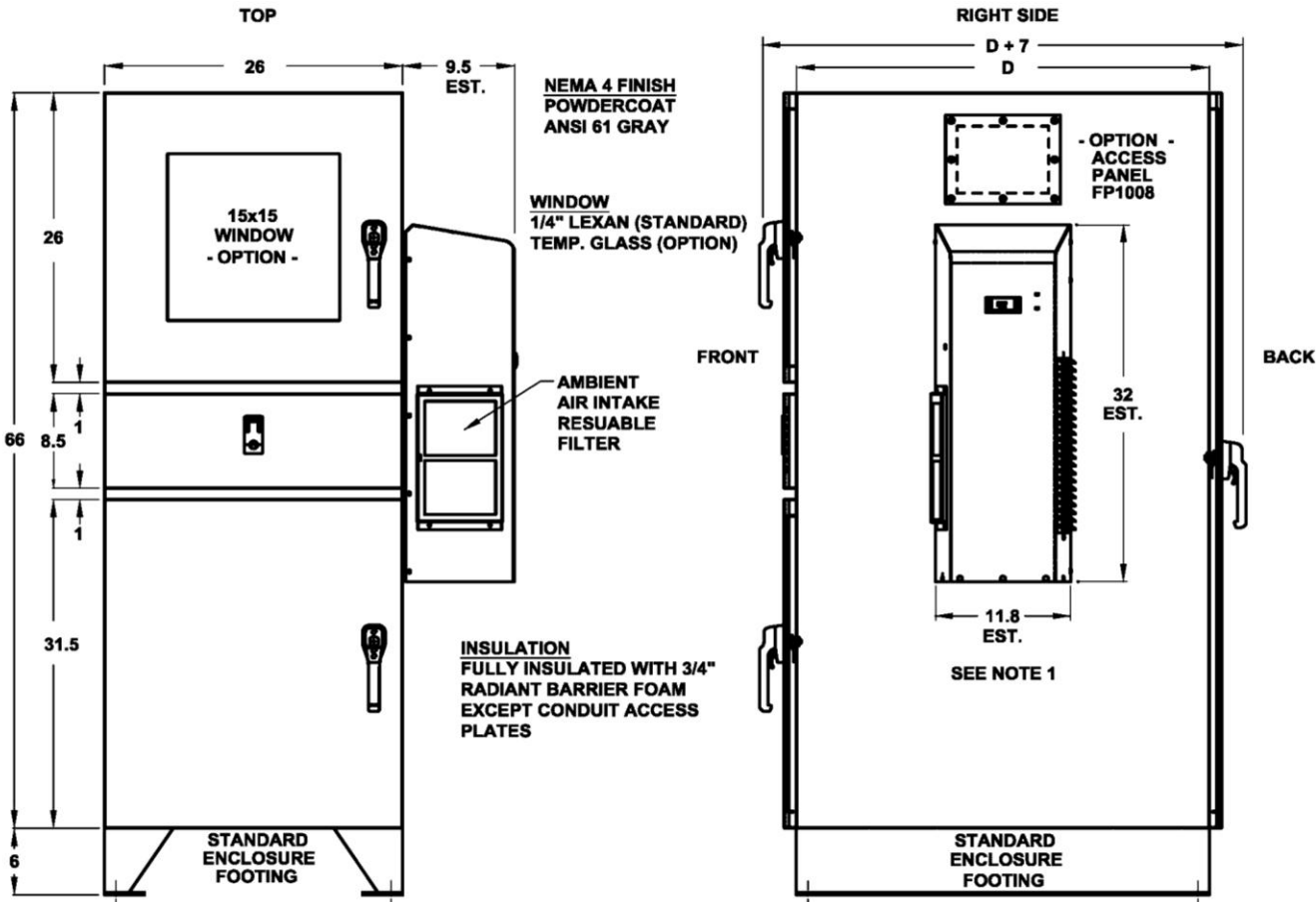


FIGURE 1 NEMACO OUTDOOR - NEMA 4 / 4X- 19" RACKMOUNT SERVER - CABINET
NOTE 1. SELECT A/C FOR ACTUAL SIZE

Free Standing - Outdoor -NEMA 4/4X - 19" SCADA Rack Cabinets

NEMACO™

Excellent Electrical Enclosures

Nemaco Tel. 281-251-4233	Quality Enclosure Solutions
NemacoTech.com	

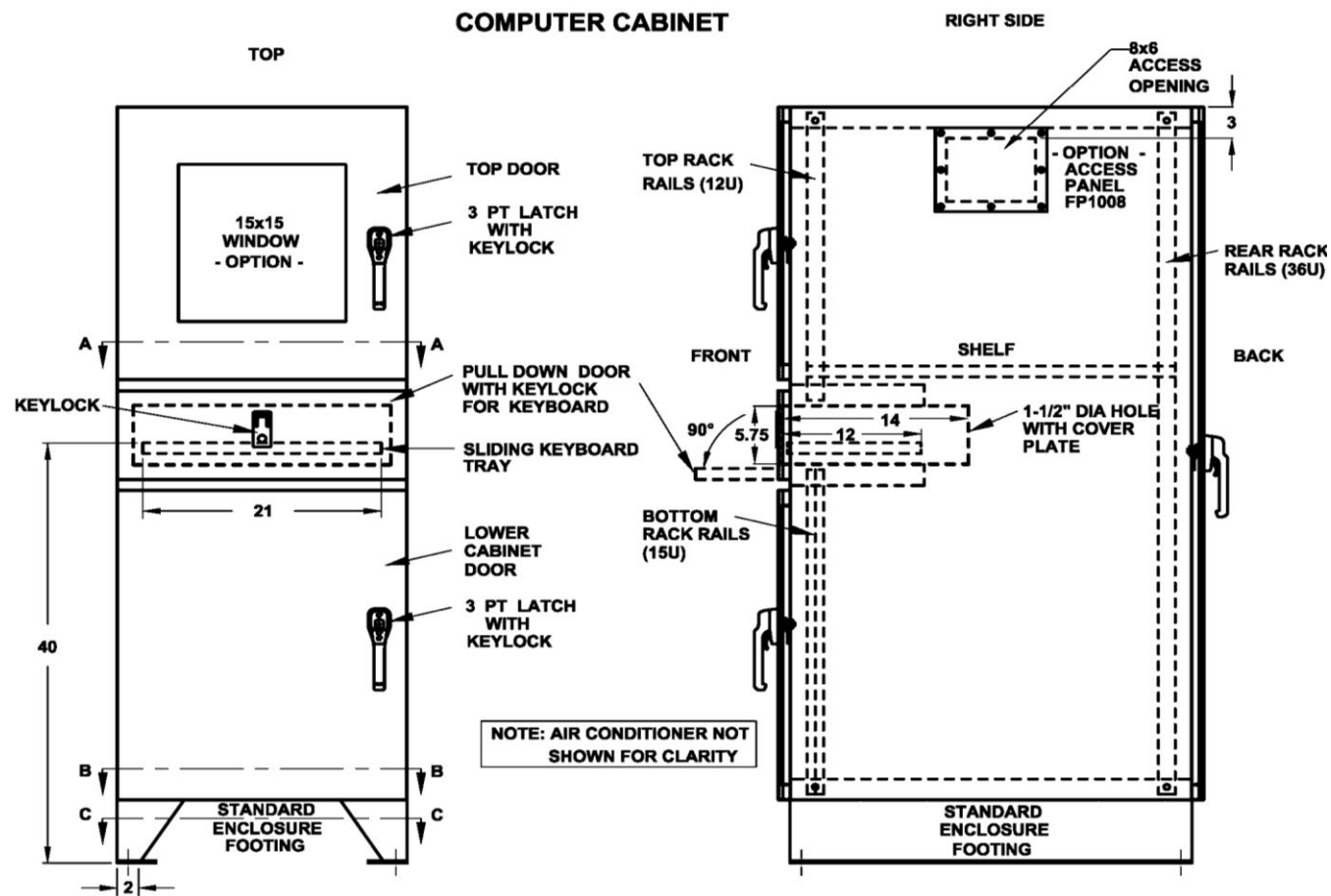


FIGURE 2 NEMA 4 / 4X - 19" RACKMOUNT SERVER - CABINET FEATURES

Free Standing - Outdoor -NEMA 4/4X - 19" SCADA Rack Cabinets

NEMACO™

Excellent Electrical Enclosures

Nemaco Tel. 281-251-4233

NemacoTech.com

Quality Enclosure Solutions

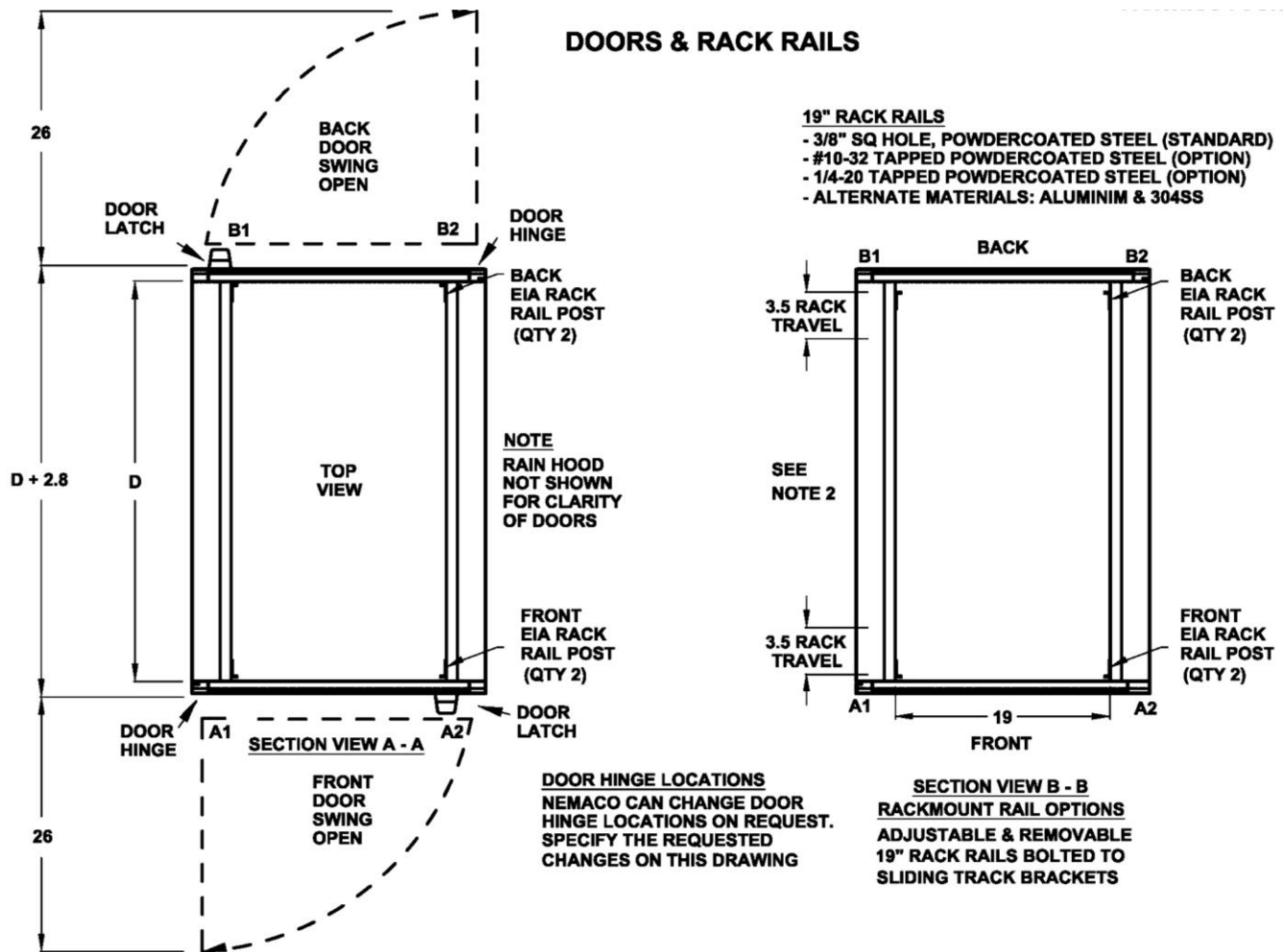


FIGURE 3 19" RACKMOUNT SERVER - DOORS AND RACK RAILS

REMOVABLE - GLAND PLATE COVERS - OPTION			
PART#	COVER SIZE	CUT-OUT DIMENSIONS	DESCRIPTION
FP1008-PC	10"X8"	8"X6"	COVER PLATE - POWERCOATED STEEL (12 GA)
FP1008-PCA	10"X8"	8"X6"	COVER PLATE - POWERCOATED ALUMINUM (1/8")
FP1008-304SS	10"X8"	8"X6"	COVER PLATE - 304 STAINLESS STEEL (12 GA)
FP1008-316SS	10"X8"	8"X6"	COVER PLATE - 316 STAINLESS STEEL (12 GA)

**NOTE 2. INSULATED ENCLOSURES HAVE LESS RACK TRAVEL
CALL NEMACO FOR DETAILS**

Free Standing - Outdoor -NEMA 4/4X - 19" SCADA Rack Cabinets

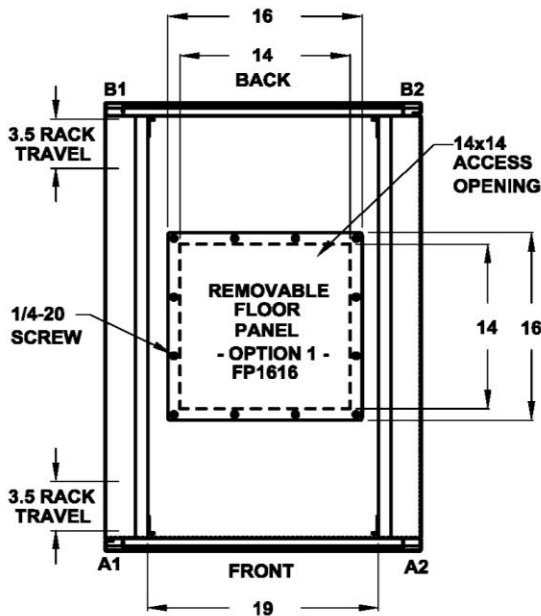
NEMACO™

Excellent Electrical Enclosures

Nemaco Tel. 281-251-4233

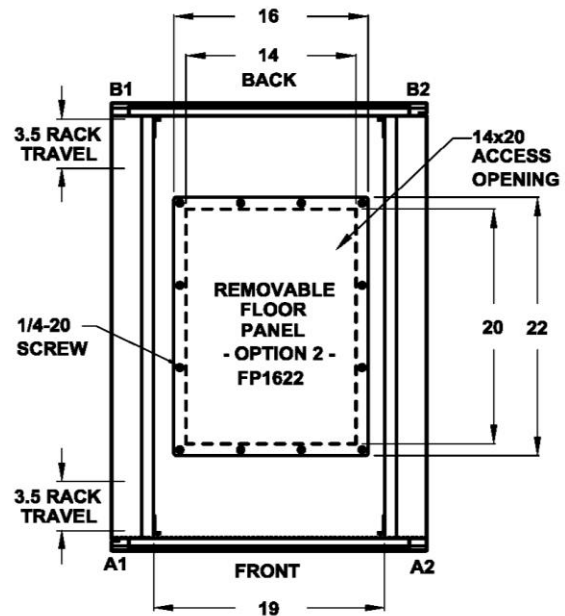
NemacoTech.com

Quality Enclosure Solutions



SECTION VIEW B - B

REMOVABLE FLOOR PANEL - OPTION 1
REMOVABLE FLAT PLATE FOR EASY FIELD
MODIFICATIONS FOR PIPE CONDUIT HOLES



SECTION VIEW B - B

REMOVABLE FLOOR PANEL - OPTION 2
LARGE REMOVABLE FLAT PLATE FOR EASY FIELD
MODIFICATIONS FOR PIPE CONDUITS HOLES & CUT-OUTS

CUSTOM FLOOR PANEL SIZES
CALL NEMACO FOR CUSTOM FLOOR PANEL SIZES
AND OTHER CUSTOM FEATURES

FIGURE 4 REMOVABLE & EASY ACCESS FLOOR PLATE - OPTIONS AVAILABLE

REMOVABLE - SMALL FLOOR PANEL COVER - OPTION

PART#	COVER SIZE	CUT-OUT DIMENSIONS	DESCRIPTION
FP1616-PC	16"X16"	14"X14"	COVER PLATE - POWERCOATED STEEL (12 GA)
FP1616-PCA	16"X16"	14"X14"	COVER PLATE - POWERCOATED ALUMINUM (1/8")
FP1616-304SS	16"X16"	14"X14"	COVER PLATE - 304 STAINLESS STEEL (12 GA)
FP1616-316SS	16"X16"	14"X14"	COVER PLATE - 316 STAINLESS STEEL (12 GA)

REMOVABLE - LARGE FLOOR PANEL COVER - OPTION

PART#	COVER SIZE	CUT-OUT DIMENSIONS	DESCRIPTION
FP2216-PC	22"X16"	20"X14"	COVER PLATE - POWERCOATED STEEL (12 GA)
FP2216-PCA	22"X16"	20"X14"	COVER PLATE - POWERCOATED ALUMINUM (1/8")
FP2216-304SS	22"X16"	20"X14"	COVER PLATE - 304 STAINLESS STEEL (12 GA)
FP2216-316SS	22"X16"	20"X14"	COVER PLATE - 316 STAINLESS STEEL (12 GA)

Free Standing - Outdoor -NEMA 4/4X - 19" SCADA Rack Cabinets

NEMACO™

Excellent Electrical Enclosures

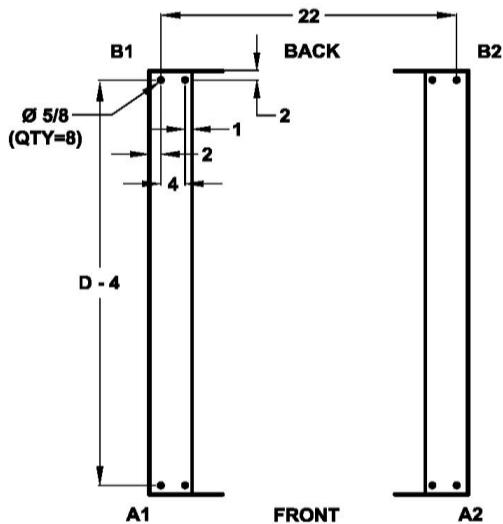
Nemaco Tel. 281-251-4233

NemacoTech.com

Quality Enclosure Solutions

FLOORMOUNT FOOTING HEIGHT

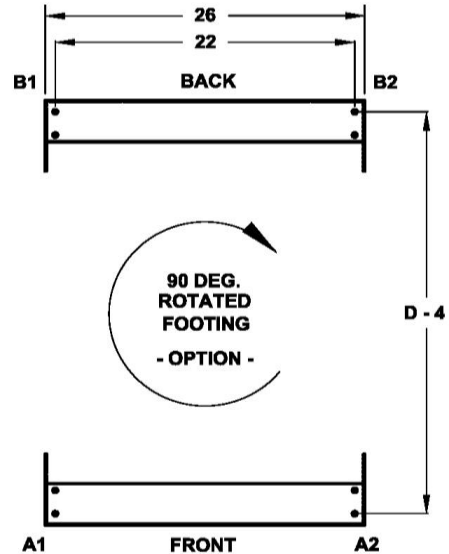
FH-06 = 6" HEIGHT
FH-12 = 12" HEIGHT
FH-18 = 18" HEIGHT
FH-24 = 24" HEIGHT



SECTION VIEW B - B
STANDARD FLOOR MOUNT FOOTING
FLOOR MOUNT HOLE DIMENSIONS
BOLT TO CONCRETE PAD OR TO
STEEL STRUCTURE

CUSTOM FOOTING DESIGN

NEMACO CAN CHANGE THE FLOOR
MOUNT DESIGN ON REQUEST.
SPECIFY THE REQUESTED
CHANGES ON THIS DRAWING



90 DEG ROTATED FOOTING - OPTION
THIS 90 DEGREE ROTATED FLOOR MOUNT
FOOTING BASE MAY BE WIDENED IN ORDER
TO PROVIDE EXTRA STABILITY & SUPPORT
FOR HEAVY EQUIPMENT

FIGURE 5 FLOORMOUNT FOOTING - OPTIONS

Air Conditioned - NEMA 4/4X - 19" Rack Server - Enclosures & Thermal Analysis Solutions

- Call US about assisting you with Thermal Analysis for proper sizing of Air Conditioners for Cooling.
- We offer "Smart" Air Conditioners with Remote Control Access & SCADA Ethernet Communications.
- 1,000 BTU to 20,000 BTU Air Conditioners are available with integrated heating options.

Wire Ways & Cable Trays for Electrical Wiring and Fiber Optic Cables

- Call US about assisting you with Copper Electrical Wiring / Fiber Optic Cables - Wire Ways
- We offer "Custom" Aluminum and Powder Coated Wire Ways for signal / power / fiber optic cables.

Rackmount - Server / SCADA - Enclosure & Cabinets - Solutions

- Call US about assisting you with - Custom - Stainless Steel - 19" Rackmount Enclosures & Cabinets
- We offer Aluminum, Stainless & Powder Coated Steel 19" Rack Rails for SCADA & Server Equipment